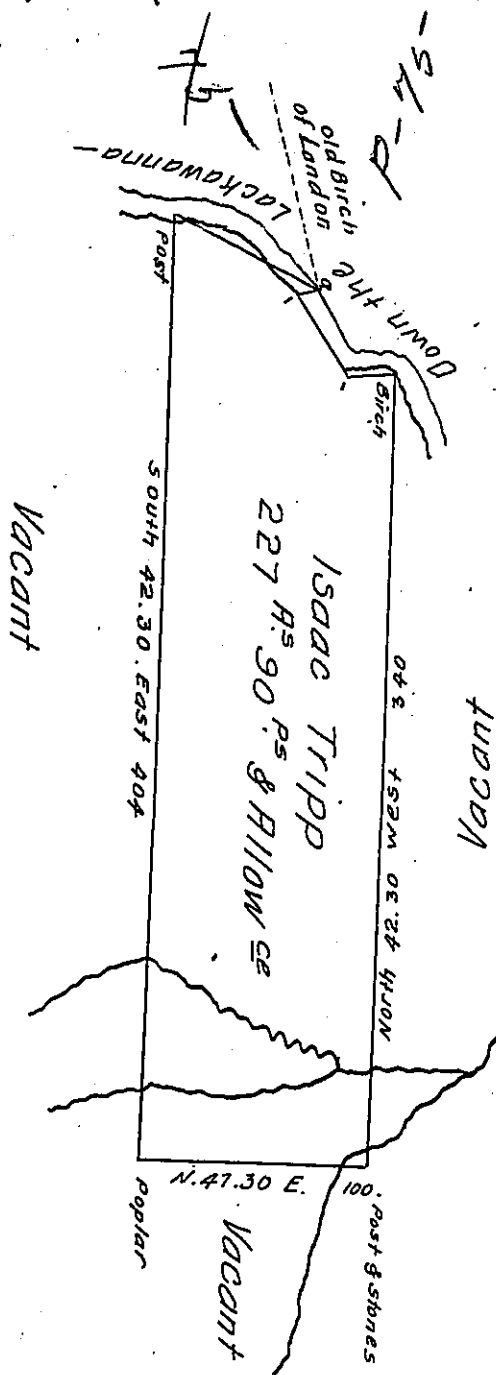


FORM NO. 1:



Courses down the Lackawanna - from
the Birch

South	41	West	18	Perches
North	80	West	42	
North	41	East	10	to old Birch of London's
South	73	West	74	to the Beginning.

Draught of a Tract of Land situate on the Lackawanna - in the County of Luzerne containing Two hundred and twenty Seven Acres and Ninety perches and the usual Allowance of Six per Centum for Roads surveyed for Isaac Tripp including his Improvement the 7th Day of September 1804 in pursuance of a Warrant bearing Date the Twenty Seventh Day of January Eighteen hundred and four.

To Samuel Cochran Esq^r } Tho^s Sambourne Dy. S^r
Surveyor General }

IN TESTIMONY that the above is a copy of the original remaining on file in the Department of Internal Affairs of Pennsylvania, made conformably to an Act of Assembly approved the 16th day of February 1833, I have hereunto set my hand and caused the Seal of said Department to be affixed at Harrisburg, this nineteenth day of December 1907.

Henry Howard
Secretary of Internal Affairs.